



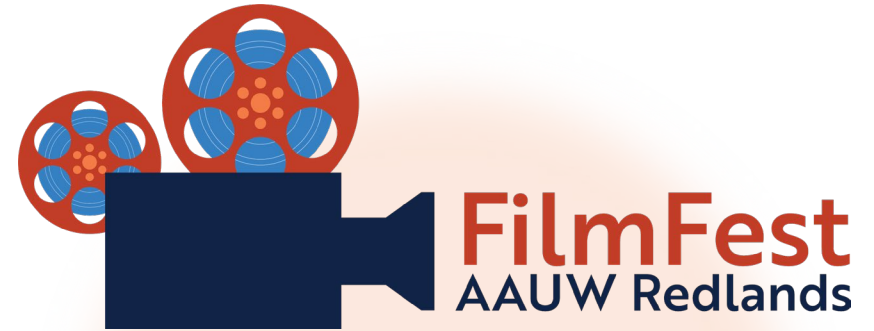
**The American Association of University Women,  
Redlands branch is dedicated to advancing equity  
for women and girls through education,  
empowerment, and advocacy.**

## **FilmFest Fundraising**

FilmFest proceeds benefit women and girls of the Inland Empire through the AAUW Redlands Branch Mission Fund. Proceeds are used for our Speech Trek competition, high school scholarships, National Conference for College Women Student Leaders scholarships, Nancy Yowell Memorial Scholarships for women returning to college after an interruption, voting registration activities, and outreach to local colleges and universities.

AAUW Redlands is run by volunteers, therefore 100% of the FilmFest proceeds goes into the Mission Fund.

Learn more at [AAUWRedlands.org](http://AAUWRedlands.org). To sign up for 2025 sponsorships, please contact [FilmFest@AAUWRedlands.org](mailto:FilmFest@AAUWRedlands.org).



**Short Films By Women - For Everyone**

**April 25, 2025**

5:45 p.m. Reception in Esri Café  
7:00 p.m. Films in Esri Auditorium

Presented by:

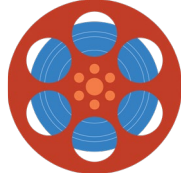


**Sponsorships**

[FilmFest@AAUWRedlands.org](mailto:FilmFest@AAUWRedlands.org)

## 2025 FilmFest

FilmFest provides an enjoyable evening of film and fellowship, while showcasing women in the film industry and raising awareness of issues that impact women.



### Reception and Raffles

The evening begins in the Esri Café with a reception featuring a variety of hot or cold hors d'oeuvres and desserts catered by the Esri Café staff. Drinks include wine, beer and flavored waters. Attendees can purchase raffle tickets for opportunity baskets.

### Film Screening and Sponsor Showcase

The film screening is held in the beautiful Esri Auditorium where sponsor slides are shown as guests find their seats. Our emcee shows each sponsor's slide, video, or logo according to their sponsorship level and speaks about their business offerings. The films are shown, then the event ends with the raffle drawing and additional acknowledgment of our sponsors.

### The 2025 Films

The short films, appropriate for audiences over the age of 13, include a mix of drama, comedy, documentary, and animation. Total viewing time is ~1.5 hours. We are confident our audience will be pleased with this year's film selections.

### Attendees

The Esri Auditorium can hold up to 350 guests. Most of the attendees are women, though men are welcome and do enjoy the event. We anticipate selling out the event again this year.

## 2025 Sponsorship Opportunities

### The Oscar - \$1500

- Logo on promotional material  
Deadline for inclusion: February 15, 2025
- Logo on ticket sale website
- Sponsor-branded promotional item for each attendee can be provided by sponsor\*
- Two individual slides or 15 sec video during pre-show\*
- Inclusion of two individual slides or 15 sec video during reception on looping video
- Six complimentary tickets to FilmFest

### The Golden Globe - \$1000

- Logo on ticket sale site
- Individual slide and live introduction during pre-show\*
- Inclusion of single slide for reception on looping video
- Four complimentary tickets to FilmFest

### The Emmy - \$500

- Individual slide and live introduction during pre-show\*
- Inclusion of single slide for reception on looping video
- Two complimentary tickets to FilmFest

### The People's Choice - \$300

- Logo on group slide during event pre-show\*
- Inclusion on group slide for reception on looping video
- One complimentary ticket to FilmFest

\*Sponsor-provided item, logo, slide, and/or video will be previewed by AAUW to ensure they are appropriate for the FilmFest audience.